



Inspired by the aesthetic of
Supertrees' branches
in the Gardens by the Bay in Singapore,
Linearity perfectly combines
geometry and texture.

△ TAN Plank 25x100cm: 630942009 SEASALT Plank 25x100cm: 630942008 Ashlar Installation

Tandus commercial modular carpet

Linearity

Product Specifications

Construction		Patterned Loop
Fiber System		100% Nylon
Dye Method		Solution Dyed
Gauge		1/12"
Pile Height Average	ASTM D-418	3.8 mm
Stitches per inch	ASTM D-418	9.5
Total Pile Weight		13.0 oz/yd²
Total Product Weight		3541 g/m² ± 5%
Density Factor	UM44D	5200 oz/yd³
Indoor Air Quality		Comply with CRI Green Label Plus Standards ID: #GLP5288. Passes GB 18587-2001
Surface Flammability	ASTM D-2859	Passes CPSC FF 1-70
Flooring Radiant Panel	ASTM E-648	Class I (Mean average CRF: 0.45 watts/cm² or higher)
Electrostatic Propensity	AATCC 134	3.0 kV or lower
Colourfastness to Light	AATCC 16E	≥ 4 after 100 hours
Standard Backing		Tandus ECOPLY™ PVC Backing
Backing Customization Option		Tandus ECOBOND™ PVC Backing
Recycled Content		Tandus ECOBOND™ contains a minimum of 35% overall recycled content
Recycling		100% recyclable when recovered
Standard Product Size		250 mm x 1000 mm

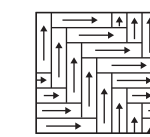
Product Notes

1. Product specifications are derived from averages resulting from normal manufacturing tolerances in yarn, fiber, temperature, humidity and colour. Product specifications may vary within normal industry and standardised testing tolerances.
2. These specifications reflect mean averages based upon tests of production runs of this carpet style by independent laboratories. A range of variances is implicit in the testing process. Furthermore, the standard test methods established to derive the specifications lack a degree of precision and repeatability; therefore, individual test results on the actual carpet purchased may differ from the specifications above.
3. Colours may vary slightly from dye lot to dye lot.
4. Backing or other materials may be changed without prior notice when shortages occur or when technological advancements become available which provide for improvement of the product's performance.
5. All products are 100% recyclable.

Warranty

Limited 15 years non-prorated surface wear, static, delamination, edge ravel, zippering and backing resiliency loss.
See warranty for details. Contact your Tarkett Representative for detailed specifications, limited warranty and sample requests.
Email: saleshk@tarkett.com

Installation Instructions



Herringbone

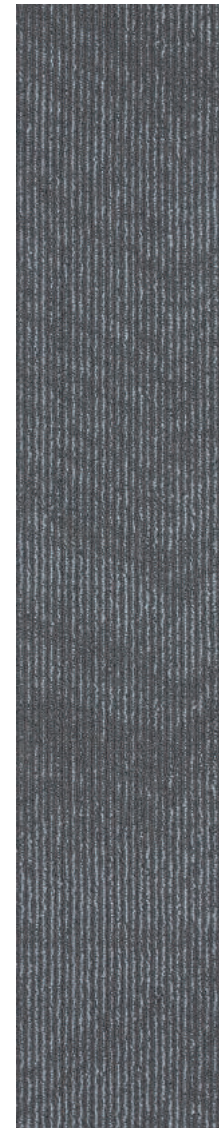


Ashlar



Tandus

Tandus



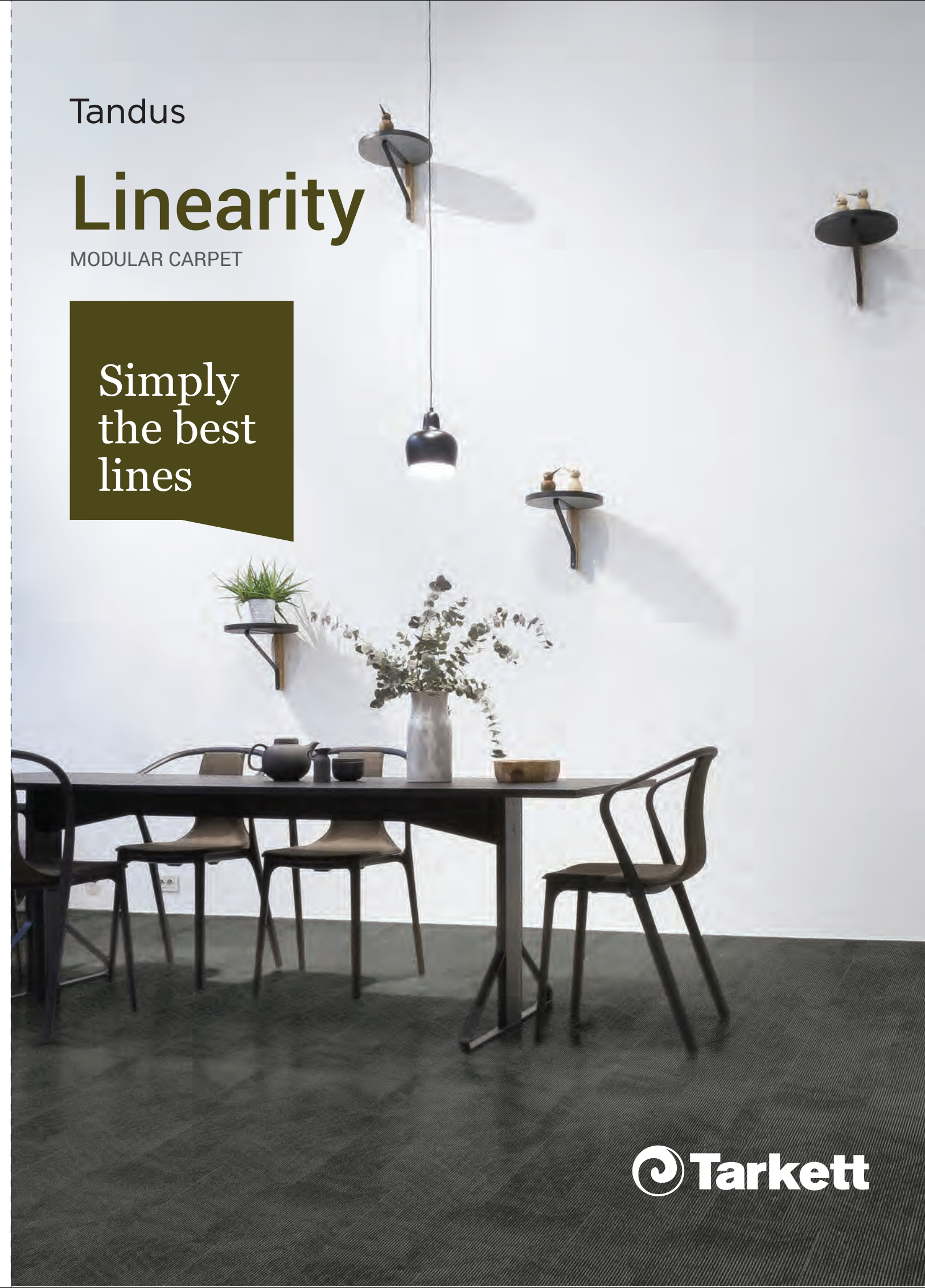
Linearity

Tandus

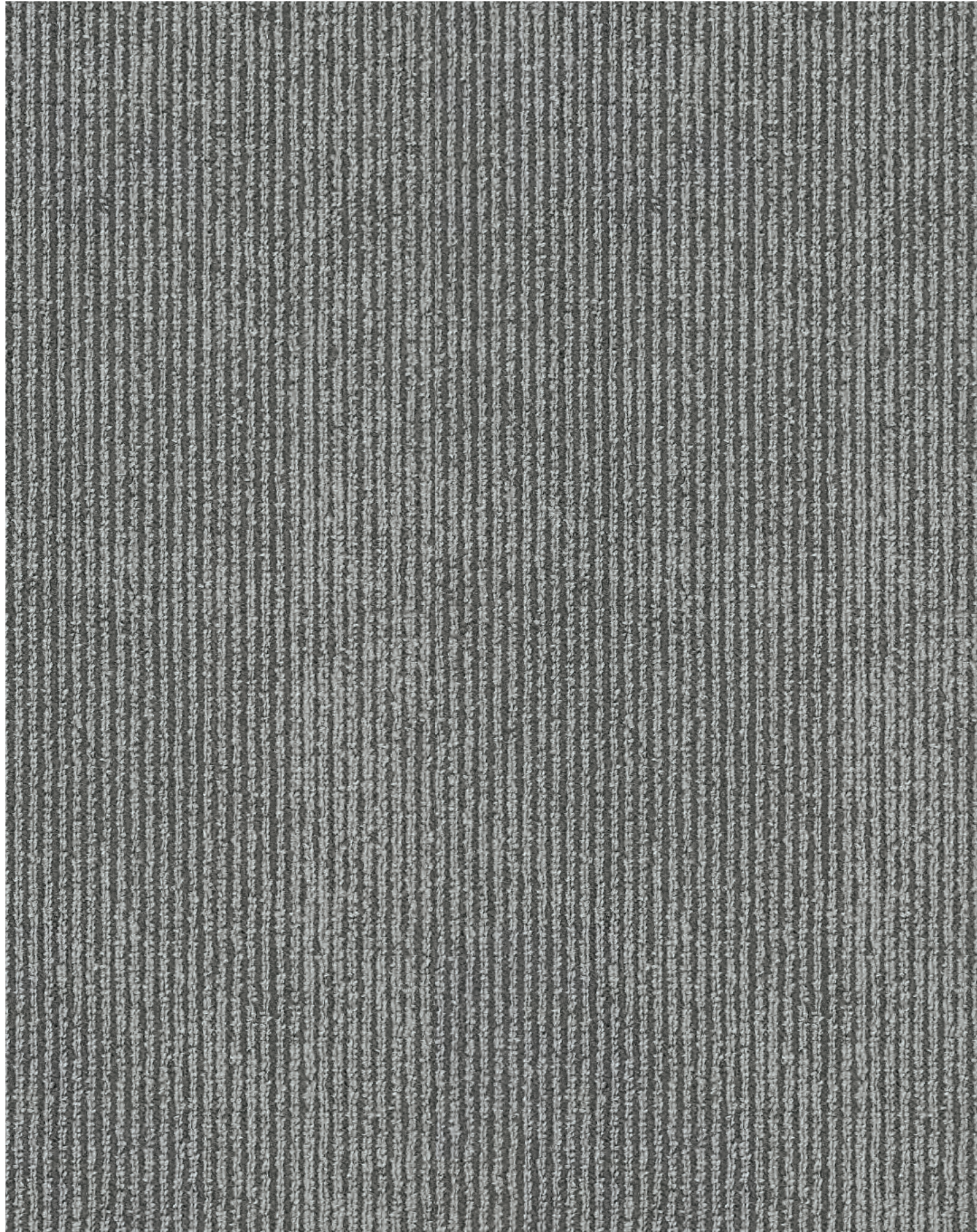
Linearity

MODULAR CARPET

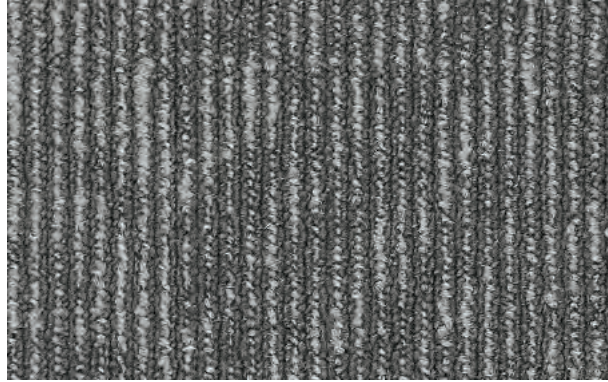
Simply
the best
lines



stick



△WATERFOWL Plank 25x100cm: 630942001



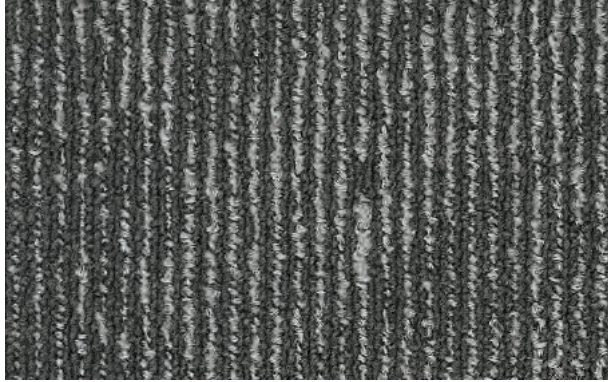
△DOME Plank 25x100cm: 630942004



△SEASALT Plank 25x100cm: 630942008



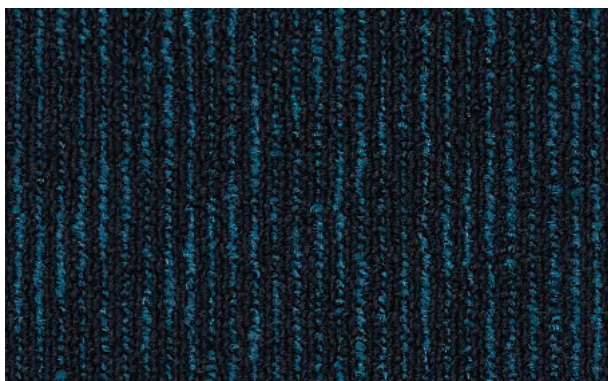
△IN DEPTH Plank 25x100cm: 630942018



△BAY SANDS Plank 25x100cm: 630942005



△BAY Plank 25x100cm: 630942007



△CHANGI Plank 25x100cm: 630942017

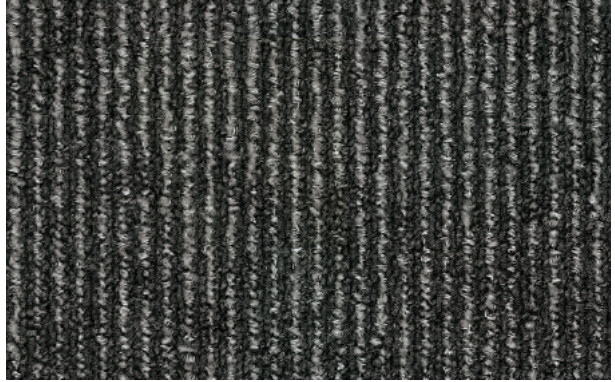


△WATERFOWL Plank 25x100cm: 630942001 Ashlar Installation

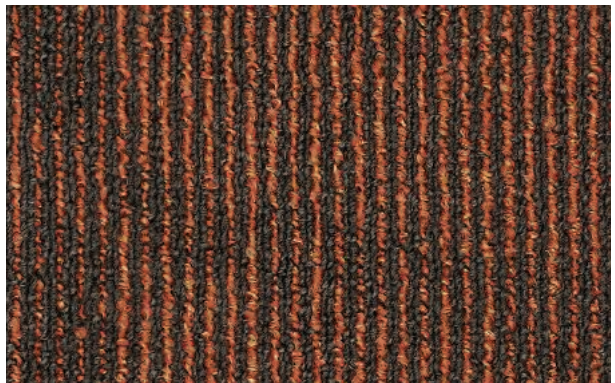
Linearity

ECOBOND™ Backing
Ecoply™ Backing

Innovation
Design
Sustainability
Service



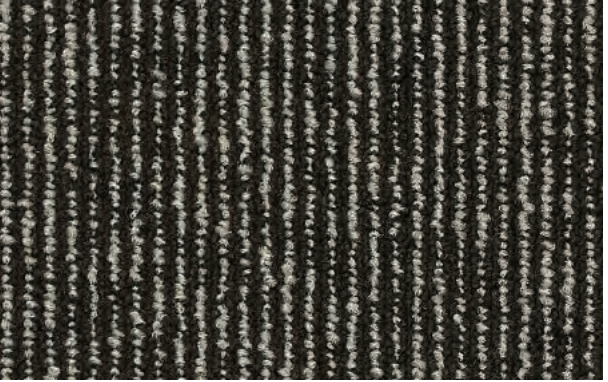
△REEF Plank 25x100cm: 630942006



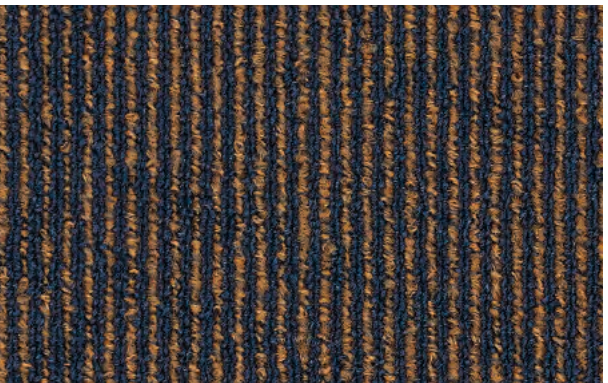
△CORAL Plank 25x100cm: 630942014



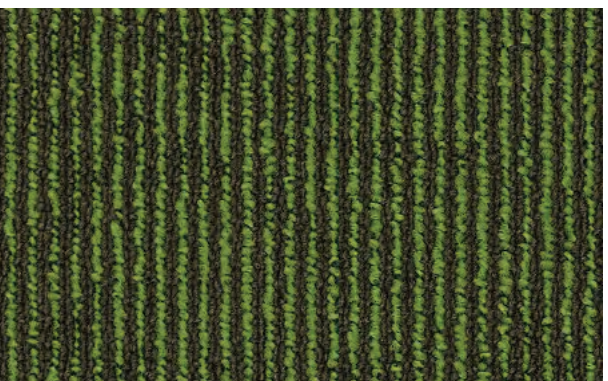
△WISTERIA Plank 25x100cm: 630942011



△TAN Plank 25x100cm: 630942009



△ROYAL Plank 25x100cm: 630942015

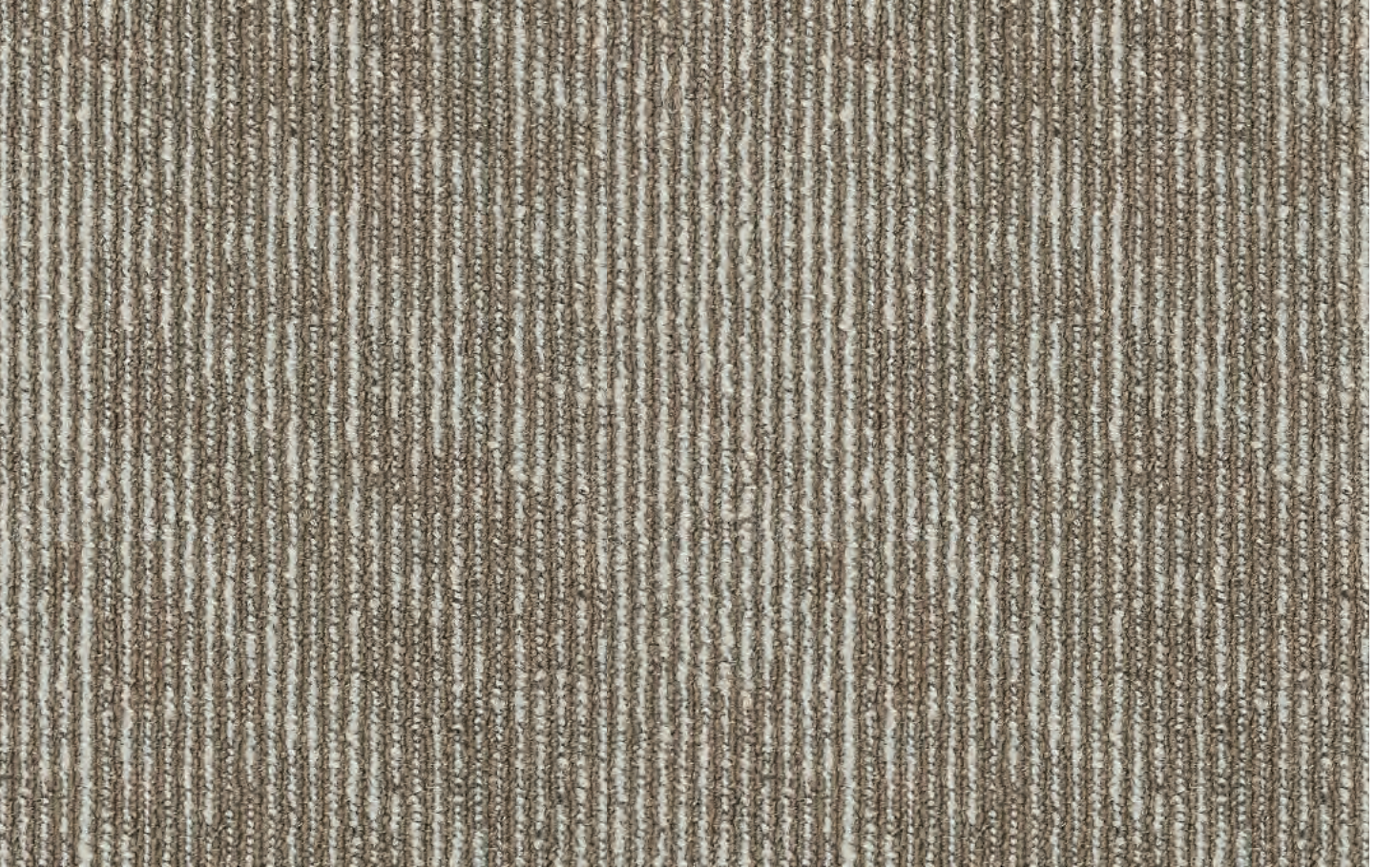


△SUPERTREE Plank 25x100cm: 630942013



△SHIMMER Plank 25x100cm: 630942003 Ashlar Installation

Note: Once certain planks of Linearity are installed together, a seam can be visible. This effect is part of the design.



△DRAGONFLY Plank 25x100cm: 630942002



△SHIMMER Plank 25x100cm: 630942003



△TAN Plank 25x100cm: 630942009 Herringbone Installation



△SEASALT Plank 25x100cm: 630942008 Ashlar Installation

Perfect for large areas,
Linearity offers both a comfortable aesthetic and a
strong personality to the workplace.

stick



△ SUPERTREE Plank 25x100cm: 630942013 Ashlar Installation

The vibrant two-tone linear pattern is declined on 15 colours including a large palette of neutrals that would suit any taste and 6 accent colors such as orange, blue, green or purple.